



County of Riverside

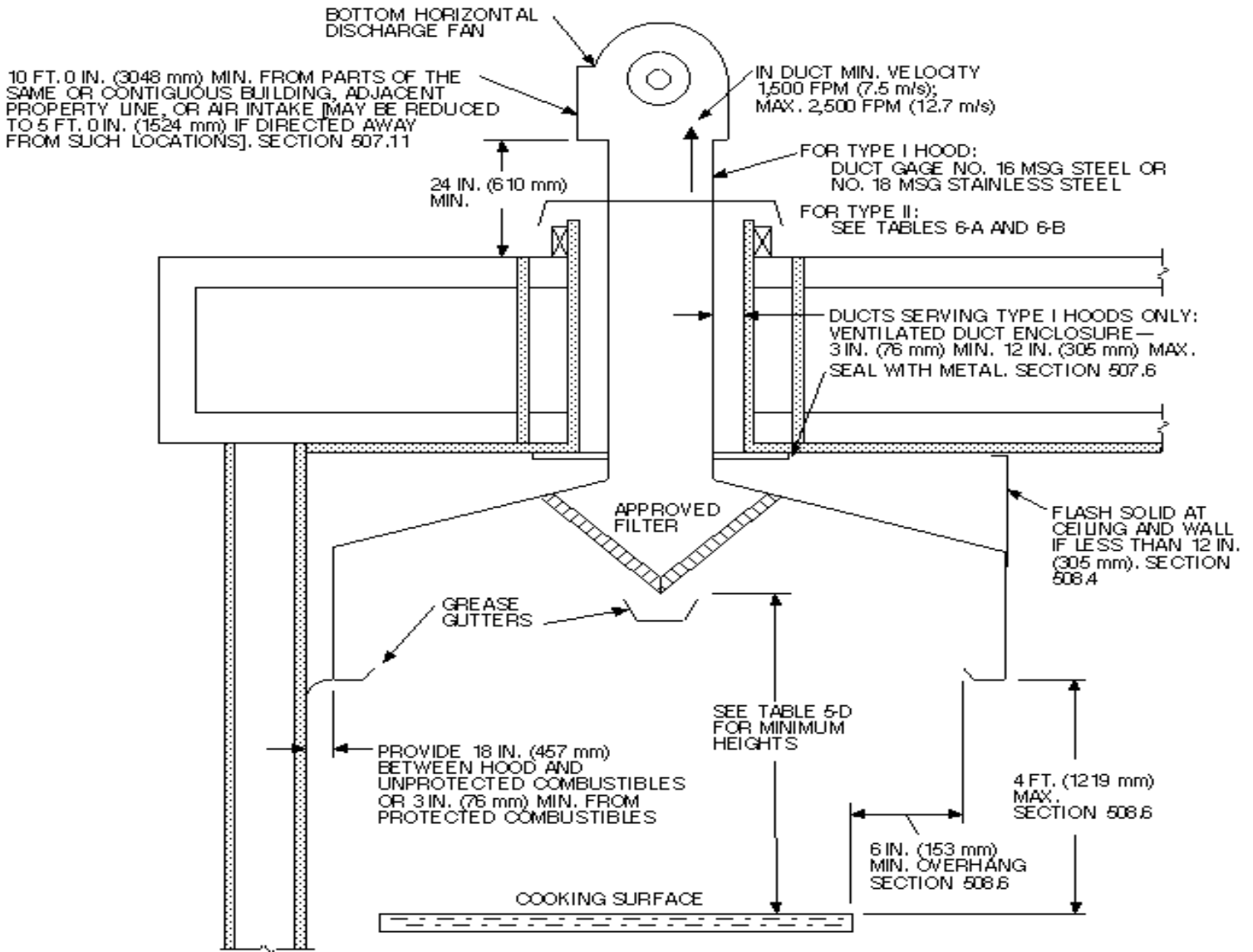
TRANSPORTATION AND LAND MANAGEMENT AGENCY

Building and Safety Department



Sam Shahrouri
Deputy Director of TLMA
Building Official

COMMERCIAL GREASE HOOD AND EXHAUST SYSTEM



TYPE I HOOD KITCHEN GREASE HOOD
GALVANIZED STEEL –NO 24 MSG
STAINLESS STEEL – 0.030 IN.
COPPER-24 OZ.PER.FT.

TYPE II HOOD GENERAL KITCHEN HOOD
GALVANIZED STEEL –NO 24 MSG
STAINLESS STEEL -0.030 IN.
COPPER-24 OZ.PER.FT

- CMC 508.2 Joints and Seams. Joints and seams shall be substantially tight.
- CMC 508.1.1 Materials and Installations. Types I and II hoods shall be constructed of galvanized steel, stainless steel, copper, or other material approved by the Building Official.
- CMC 505.3 Makeup Air. Makeup air shall be provided to replenish the air exhausted by the ventilation system.
- CMC 506.5 Support. Hoods shall be secured in place by noncombustible supports.